

Children and Young People's Scrutiny Commission

SEND and Education

Presented by :
Sophie Maltby
Director of SEND and Education

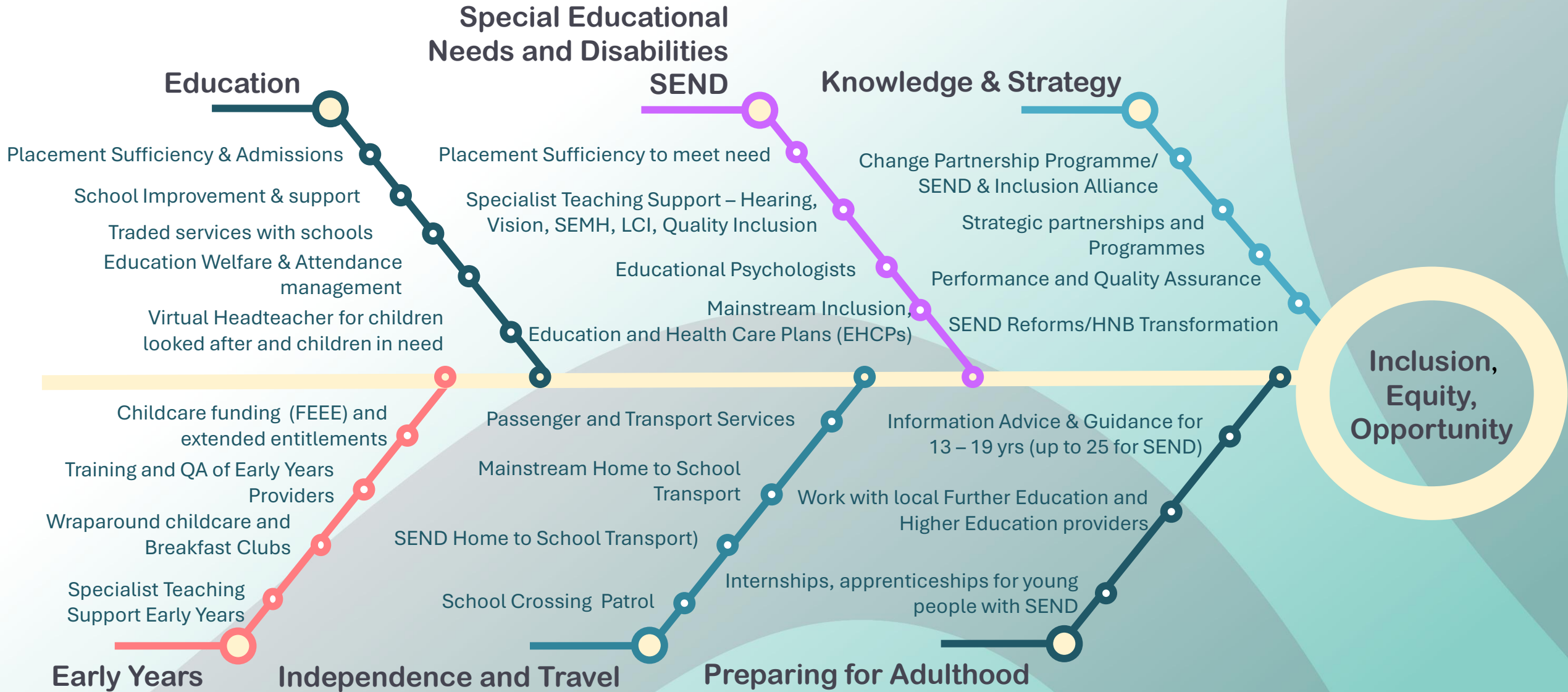


Structure

Sophie Maltby Director of SEND and Education

Kevin O'Brien Head of Systems, Quality and Performance	Caroline Jolliffe Head of SEND Integrated Services (0-25)	Jessica Nicholls Head of SEND Support Services	Michael Wilsher Head of Education Sufficiency and Admissions	Melanie Gaiderman Lead Raising Achievement Advisor	Claire Lakin Head of Early years and Childcare	Ellen Collier Education Welfare Service Manager (Reports to Michael Wilsher)	Esther Popp Virtual Head Teacher (Reports to Jessica Nicholls)
Partnerships and Programmes	Special Education Service	Social, Emotional and Mental Health Team	Pupil Place Planning	Governor Services	Early Education Development Officers	Education Welfare Officers	Virtual School Officers
SEND Reforms/HNB Transformation	Passenger and Transport Services	Early Years Support Team & Pindar Nursery	Development Consultant Officers	Raising Achievement Consultants	Early Years Entitlements	Home Education Officers	
Quality Inclusion Team	Connexions	Education Psychology	Admissions		School Aged Childcare	Exclusions Officers	
Family Information, Early Years	Preparing for Adulthood	Learning, Communication & Interaction Team	Education Welfare		Good Levels of Development (GLD)		
Schools Portal/communication Websites	Independence and Travel	Hearing Support Team					
	SEND Local Offer	Vision Support Team					
		Virtual School Team					

Our support to children and their families



National reforms context



Education Priorities

Social Care Reforms

SEND & Inclusion

Children and young people visible, valued, supported and thriving in their communities

Best Start Family Hubs

Schools White Paper

Best Start in Life

Childcare reforms

NHS 10-year plan